



reform[®]
sports

*2.000 Seats Stadium
With Athletics Tracks*



HEADQUARTER - İSTANBUL/TÜRKİYE

REFORM SPORTS



[reformsports.com](https://www.reformsports.com)



info@reformsports.com



+90 212 533 70 73



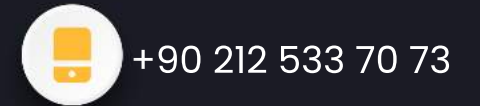
FACTORY

TEKİRDAĞ/TÜRKİYE

TURF PRODUCTION CAPACITY 11.000.000 M² / YEAR •

RUBBER PRODUCTION CAPACITY 300.000 M² / YEAR •

STEEL CONSTRUCTION CAPACITY 12.000 TON / YEAR •



○ WE ARE LEADING ○

- **STADIUMS**
- **SPORTS ARENA**
- **TURN-KEY SPORTS COMPLEXES**
- **FIFA FOOTBALL FIELDS**
- **PROFESSIONAL FOOTBALL FIELDS**
- **HYBRID TURF FOOTBALL FIELDS**
- **ATHLETICS TRACKS**
- **METAL CONSTRUCTION**
- **INDOOR SPORTS COMPLEXES**
- **OUTDOOR SPORTS COMPLEXES**
- **PADEL COURTS**
- **FOOT 5 COURTS**
- **BASKETBALL, VOLLEYBALL, HANDBALL, TENNIS COURT**
- **HOCKEY, CRICKET FIELDS**
- **GOLF COURSES**
- **MULTISPORT FLOORING**
- **LANDSCAPING**
- **CHILDREN PLAY GROUNDS**

WHY REFORM SPORTS?

- OVER 30 YEARS OF EXPERIENCE
- TURN-KEY SOLUTIONS
- FLEXIBILITY AND FAST DELIVERY
- ENVIRONMENTALLY FRIENDLY
- RECYCLABLE MATERIALS
- HIGH QUALITY AND COMPETITIVE PRICES
- WARRANTY AND DURABILITY
- INTERNATIONALLY CERTIFIED



[reformsports.com](https://www.reformsports.com)



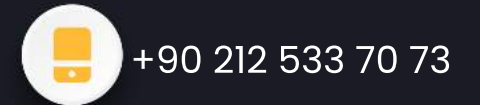
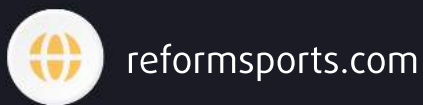
info@reformsports.com



+90 212 533 70 73



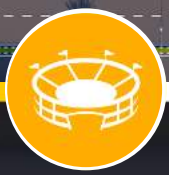
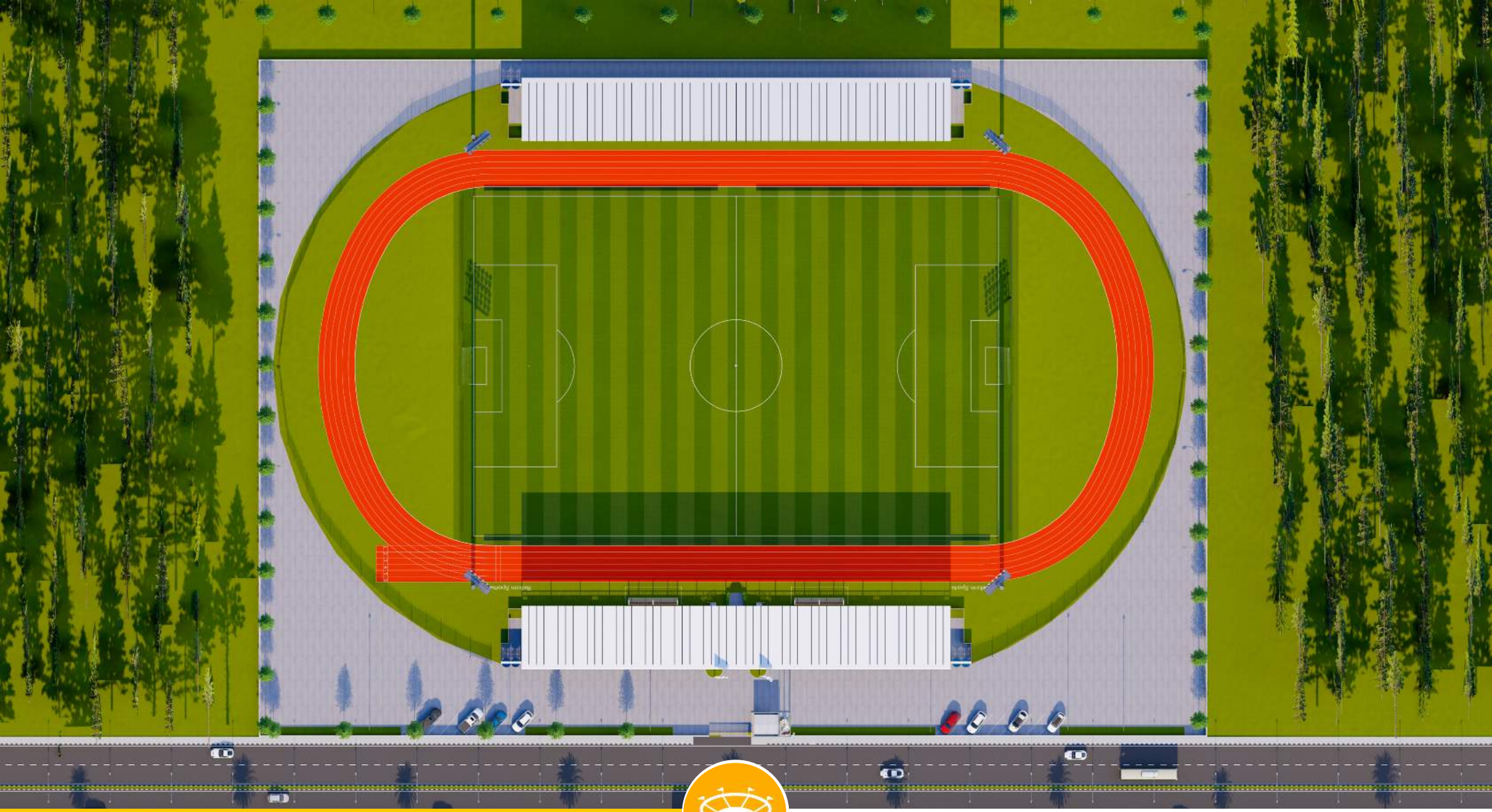
BRB HOLDING



HIGHEST QUALITY

CERTIFIED BY INTERNATIONAL AUTHORITIES





SCENARIO 1



▶ STADIUM

- Football and athletics playgrounds in accordance with the FIFA and World Athletics standards
- Large circulation area on the ground floor that can accommodate the general public.
- Covered Tribunes, technical rooms, cafes and offices.



STADIUM

- 1 STANDARD FOOTBALL FIELD
- 2 ATHLETICS TRACK
- 3 TRIBUNES
- 4 COMMON SPACE





STADIUM



reformsports.com



info@reformsports.com



+90 212 533 70 73

STADIUM

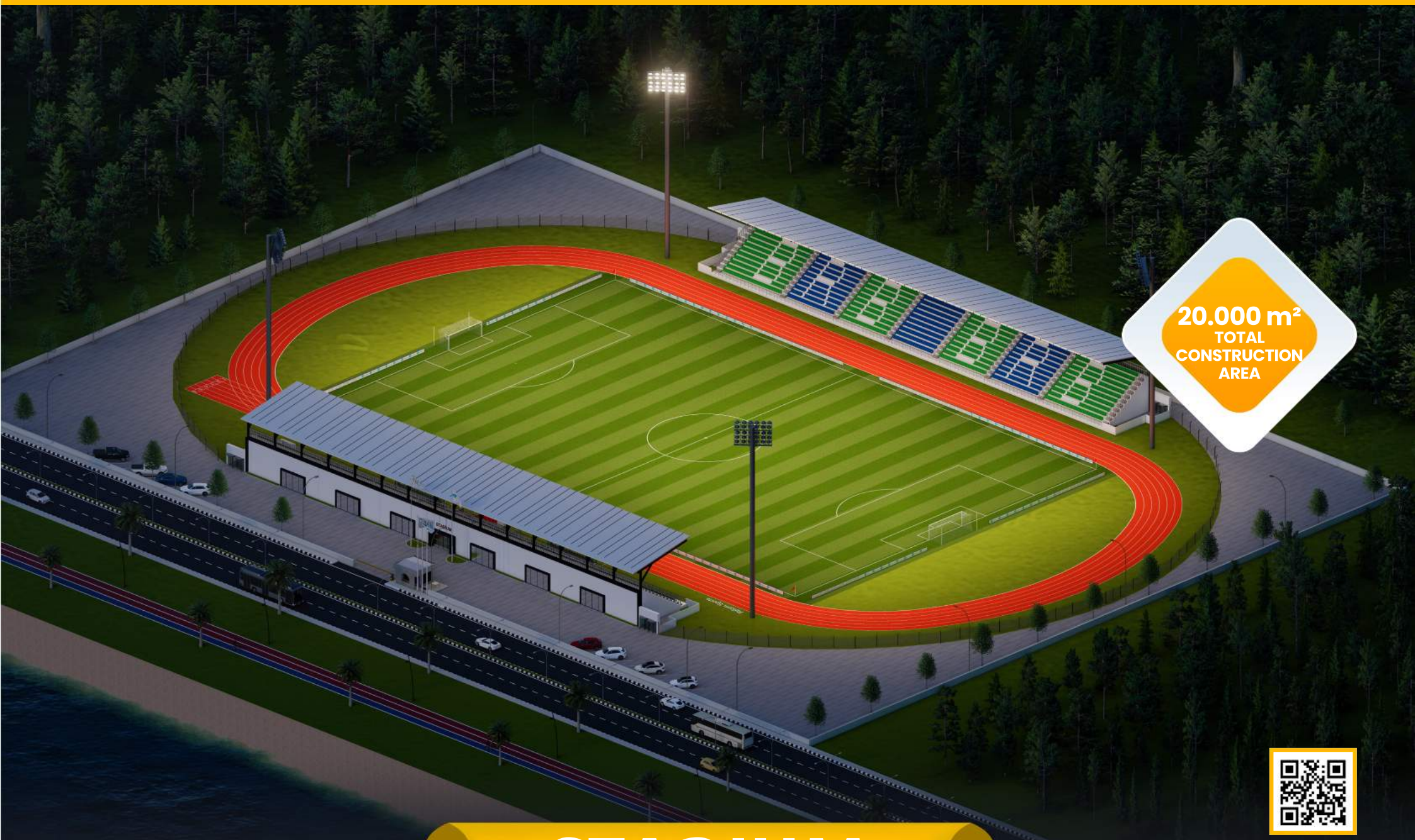
TECHNICAL SPECIFICATIONS

- 20.000m² Total construction area
- 1.200m² indoor area
- 7.140m² FIFA standards football field
- 3.500 m² Sandwich system running track
- 2000 seating capacity roofed tribunes
- 100 VIP Tribunes,
- 7 Protocol Tribunes
- Goal post and nets,
- Corner poles
- Substitute benches
- Referee bench
- Ligthing system
- Led Score Board
- Fire system
- Emergency alert system
- Car parking area for 40 cars
- Sound system (Optional)

LIVING AREAS

- Cafeterias
- Fitnes center
- Locker rooms
- Referee locker rooms
- Public restrooms
- Disbaled restrooms
- Observers and representatives rooms
- Meeting rooms
- Facility supervisor room
- Staff rooms
- Security rooms
- Offices
- UPS room
- Electriciry controlling room
- Camera System (Optional)
- Card access control system (Optional)
- Generator (Optional)





20.000 m²
TOTAL
CONSTRUCTION
AREA



STADIUM



reformsports.com



info@reformsports.com



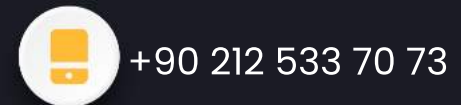
+90 212 533 70 73



1.200 m²
INDOOR
AREA



STADIUM

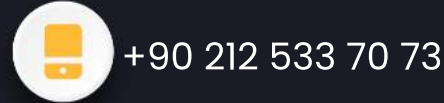




**ERGONOMIC
DESIGN**



STADIUM





**STANDARD
FOOTBALL FIELD**



reformsports.com



info@reformsports.com



+90 212 533 70 73

High Quality

Our products are produced with the highest quality, ethical standards and in accordance with the international standards



Resistant

Our abrasion and wear resistant products come with different heights, colour options and unique characteristics



Long Lasting

Artificial turfs are easy to maintain and cheap, as well as have a very long life with low maintenance



Natural Appearance

It is produced with monofilament yarns for aesthetic and more natural appearance



High UV Resistance

It is produced with special UV resistant additive. Besides being resistant to UV rays, it is also resistant to cold weather



Nature Friendly

Our products are manufactured with environmental awareness and consist of recyclable materials with the use of effective technology and components



REFORM SPORTS' synthetic turf is produced with new generation monofilament yarns provides high-quality and provides maximum-performance for training and professional football pitches. Delays wear and tear due to modern yarn design and features. For many years; ball roll and bouncing and shock absorbing values remain in accordance with international standards. It doesn't reduce player's performance, it is environmentally friendly and recyclable



ARTIFICIAL GRASS



reformsports.com



info@reformsports.com



+90 212 533 70 73



7.140 m²



STANDARD FOOTBALL FIELD



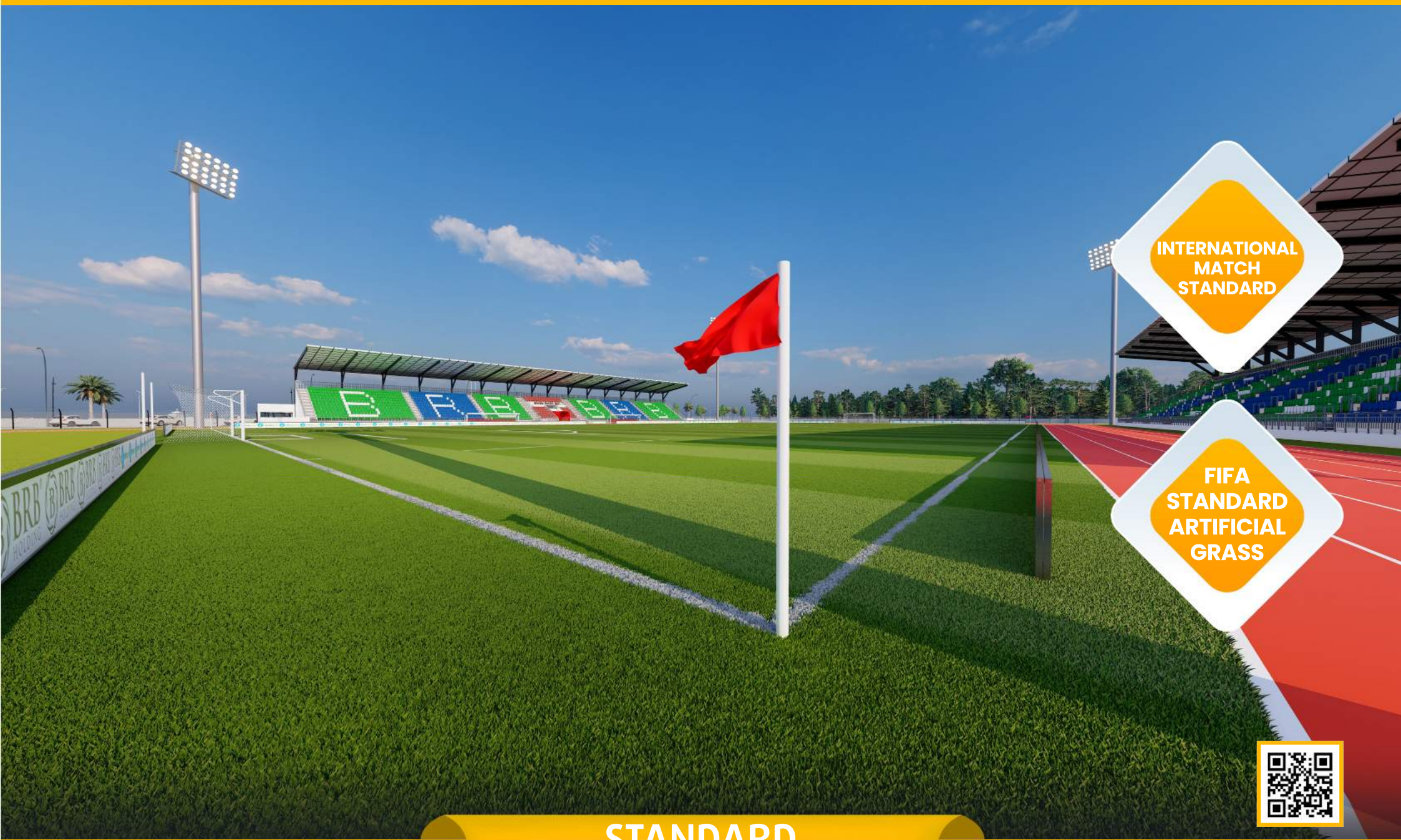
reformsports.com



info@reformsports.com



+90 212 533 70 73



**INTERNATIONAL
MATCH
STANDARD**

**FIFA
STANDARD
ARTIFICIAL
GRASS**



STANDARD FOOTBALL FIELD



reformsports.com



info@reformsports.com



+90 212 533 70 73



ATHLETICS TRACK



reformsports.com



info@reformsports.com



+90 212 533 70 73

High Quality

Our products are produced with the highest quality, ethical standards and in accordance with the international standards



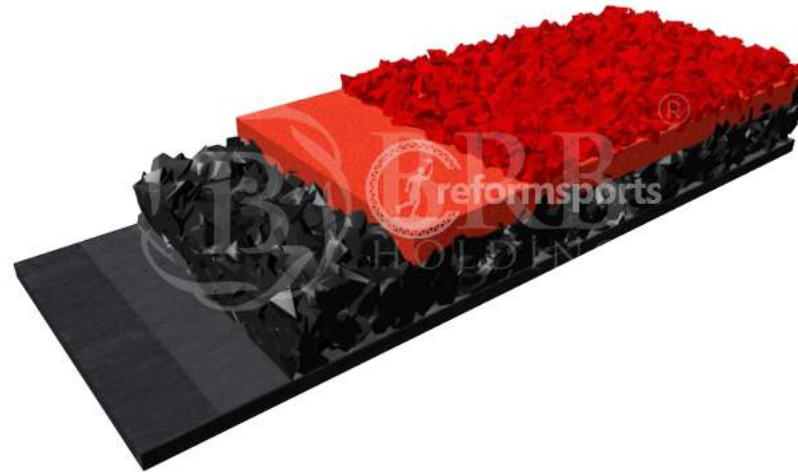
Resistant

Our abrasion and wear resistant products come with different heights, colour options and unique characteristics



Long Lasting

Artificial turfs are easy to maintain and cheap, as well as have a very long life with low maintenance



Natural Appearance

It is produced with monofilament yarns for aesthetic and more natural appearance



High UV Resistance

It is produced with special UV resistant additive. Besides being resistant to UV rays, it is also resistant to cold weather



Nature Friendly

Our products are manufactured with environmental awareness and consist of recyclable materials with the use of effective technology and components



Sandwich System Floor is durable, long lasting and resistant to all weather conditions. It can be used for international competitions. The system is water permeable and has shock absorbing. It is a ground resistant to puncture. The floor has a surface, which prevents slipping.



SANDWICH SYSTEM



reformsports.com



info@reformsports.com



+90 212 533 70 73



**6 LANES
RUNNING
RACKS**



ATHLETICS TRACK



reformsports.com



info@reformsports.com



+90 212 533 70 73



ATHLETICS TRACK



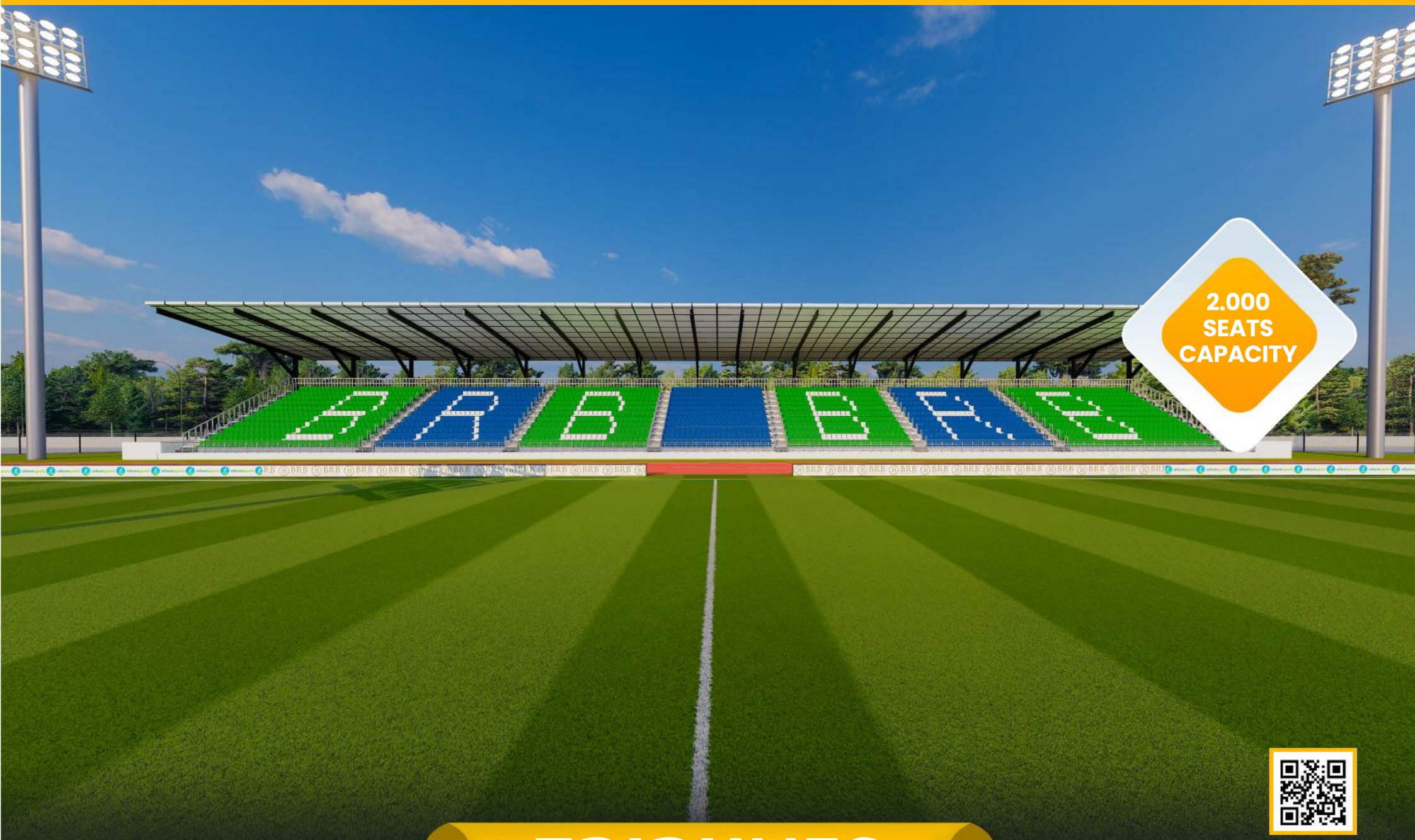
reformsports.com



info@reformsports.com



+90 212 533 70 73



2.000
SEATS
CAPACITY



TRIBUNES



reformsports.com



info@reformsports.com



+90 212 533 70 73



100 VIP SEATS

ERGONOMIC DESIGN



TRIBUNES



[reformsports.com](https://www.reformsports.com)



info@reformsports.com



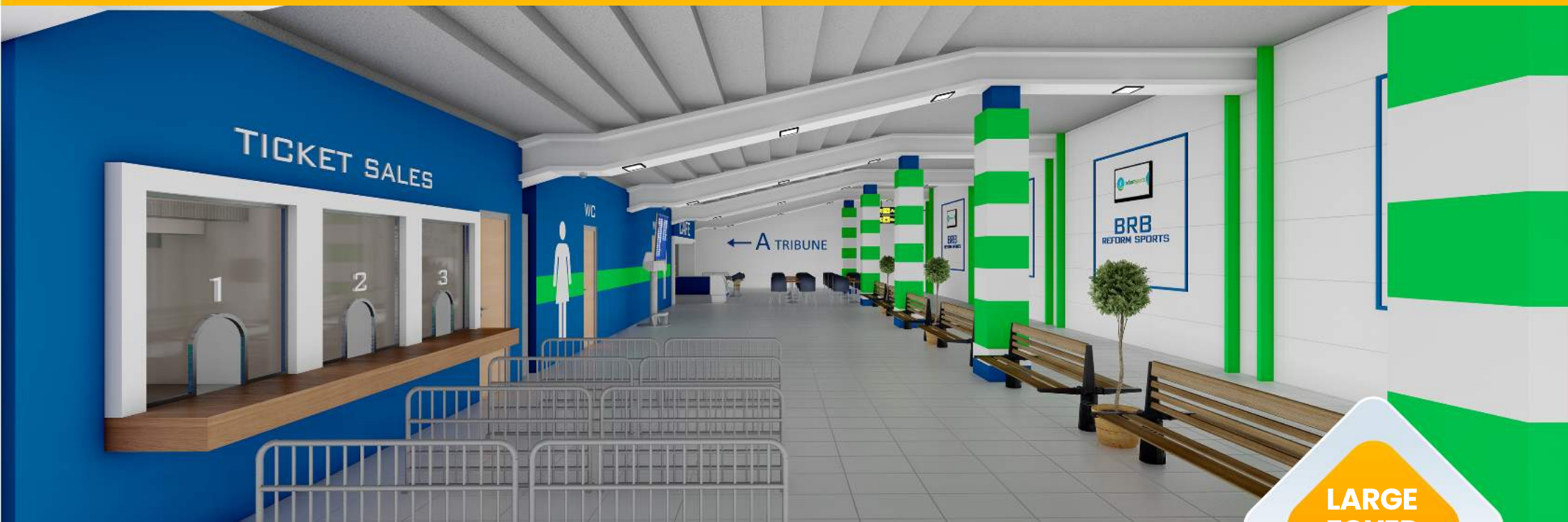
+90 212 533 70 73



600 m²



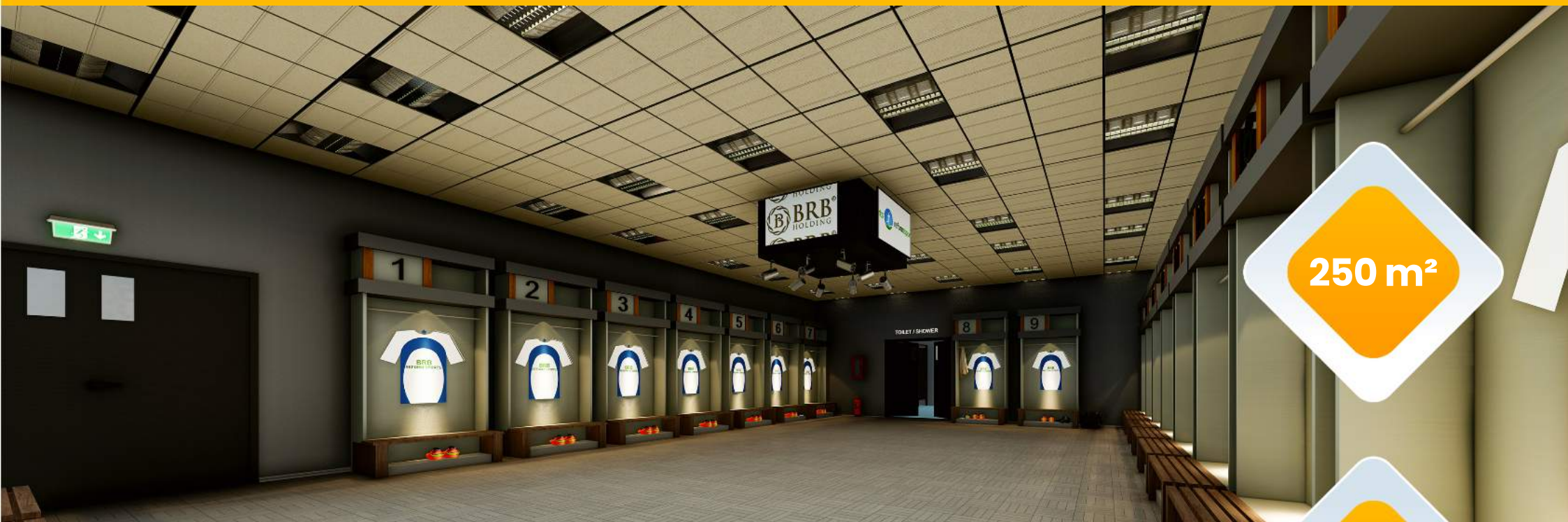
INTERIOR



LARGE
FOYER
AREA



INTERIOR



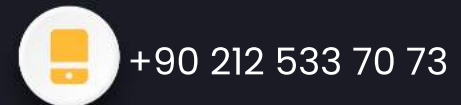
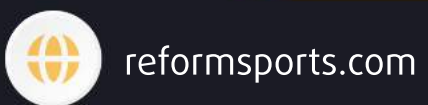
250 m²



2 FOR
TEAMS



LOCKER ROOM





70 M²
FOR
TEAMS



WC & BATHROOM



40 m²



MEDICAL ROOM



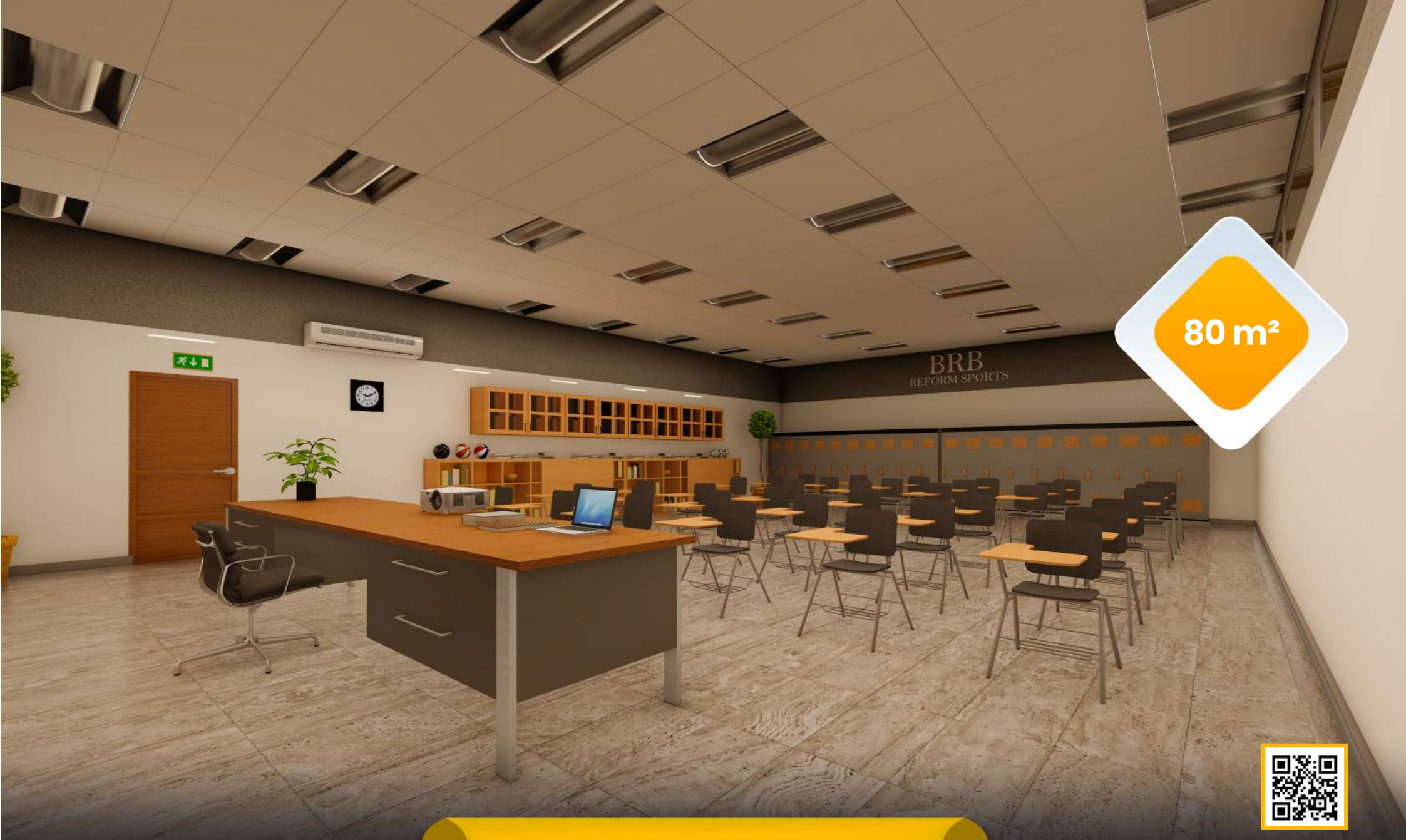
[reformsports.com](https://www.reformsports.com)



info@reformsports.com



+90 212 533 70 73



80 m²



SPORTS ACADEMY



reformsports.com



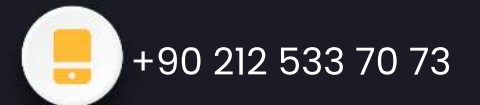
info@reformsports.com



+90 212 533 70 73



REFEREE ROOM





BRB
REFORM SPORTS

30 m²



BRB
REFORM SPORTS

LOCKER ROOM



TECHNICAL DIRECTOR'S ROOM



reformsports.com



info@reformsports.com



+90 212 533 70 73



PRESS AND MEETING ROOM



reformsports.com



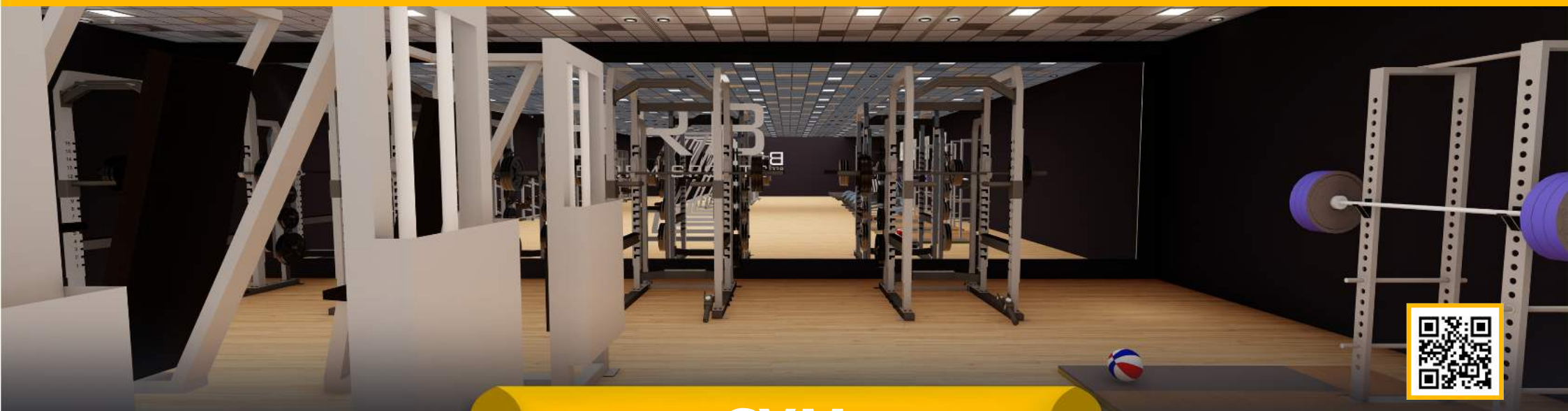
info@reformsports.com



+90 212 533 70 73



100 m²



GYM



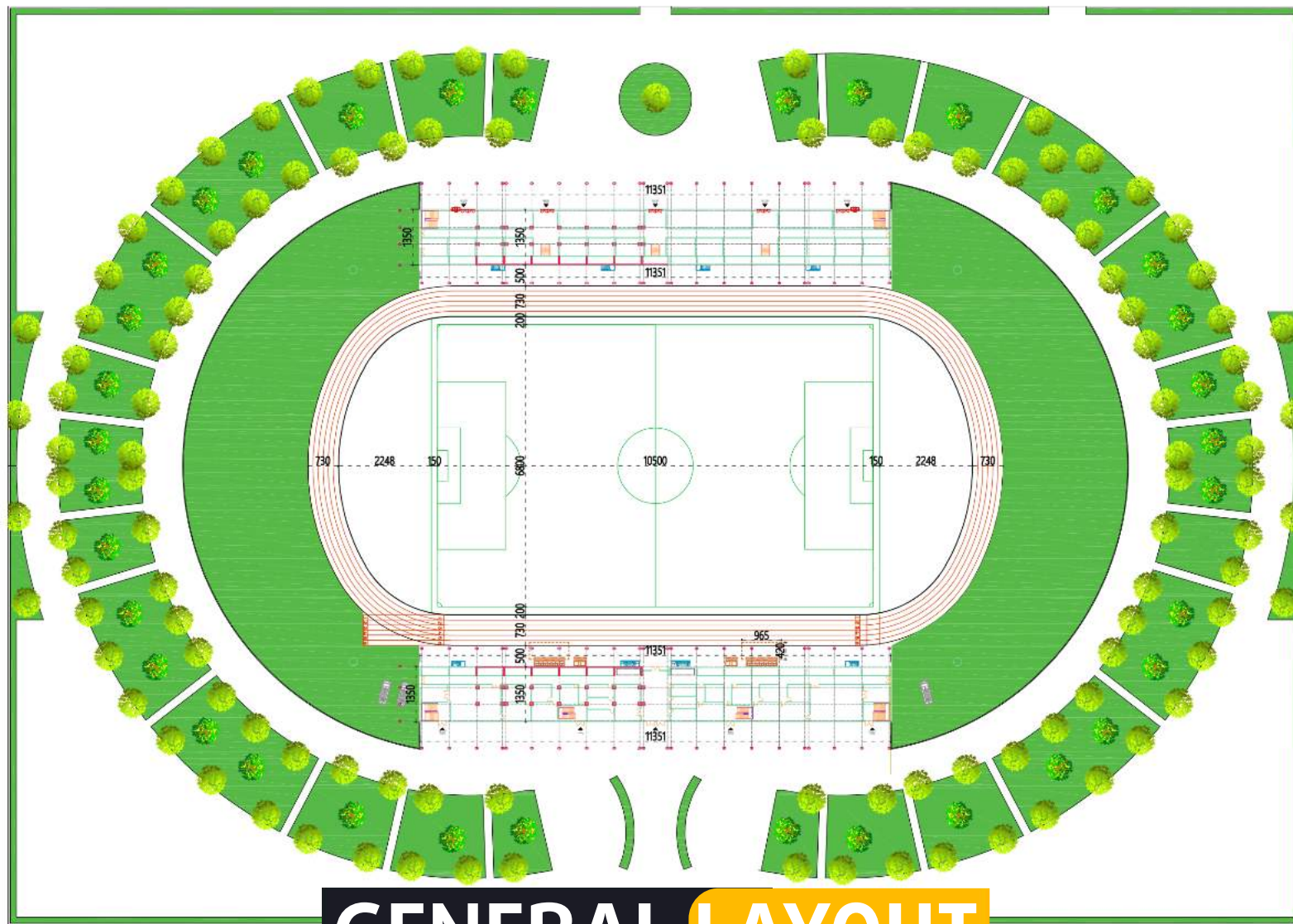
reformsports.com



info@reformsports.com



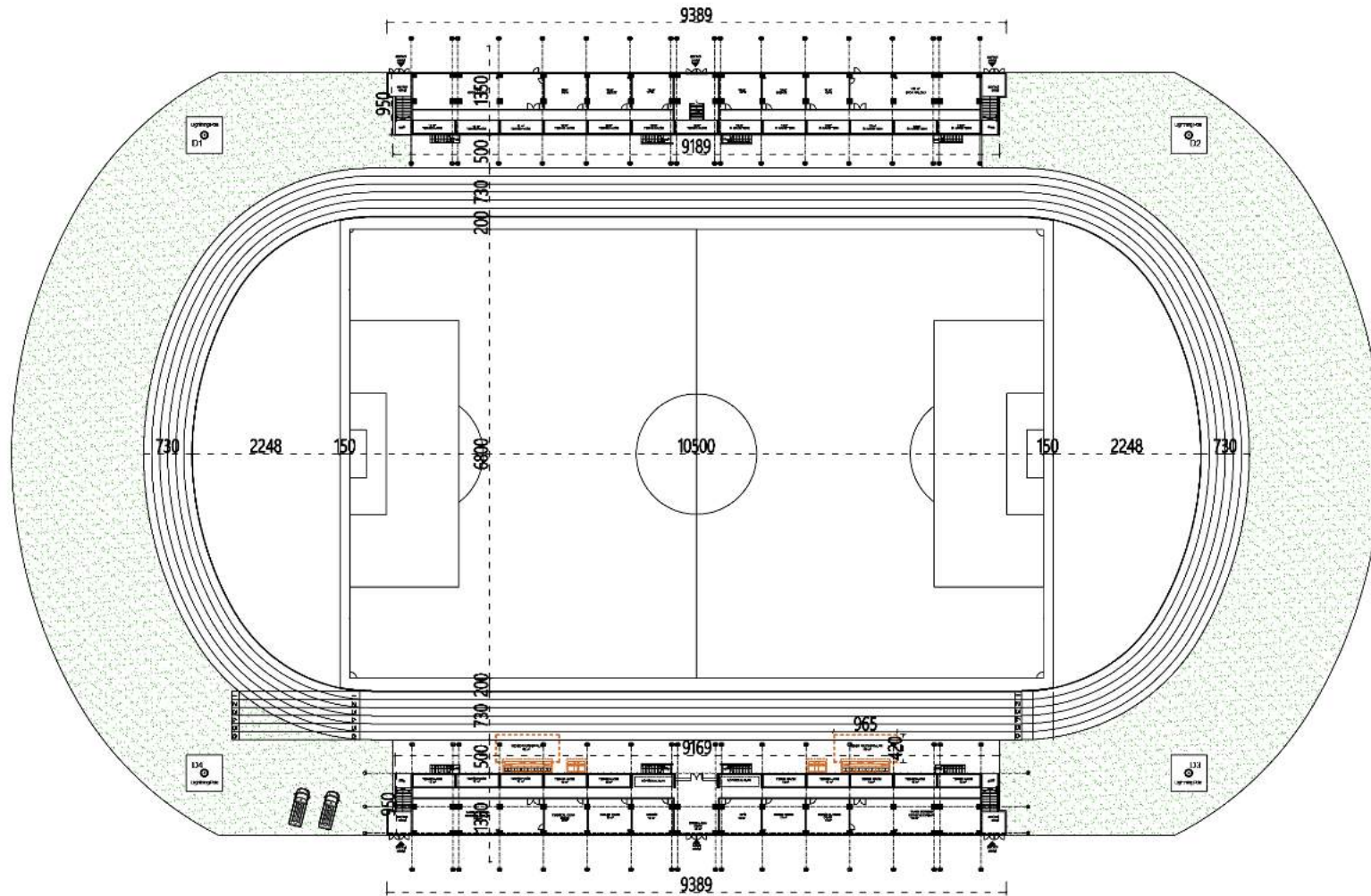
+90 212 533 70 73



GENERAL LAYOUT

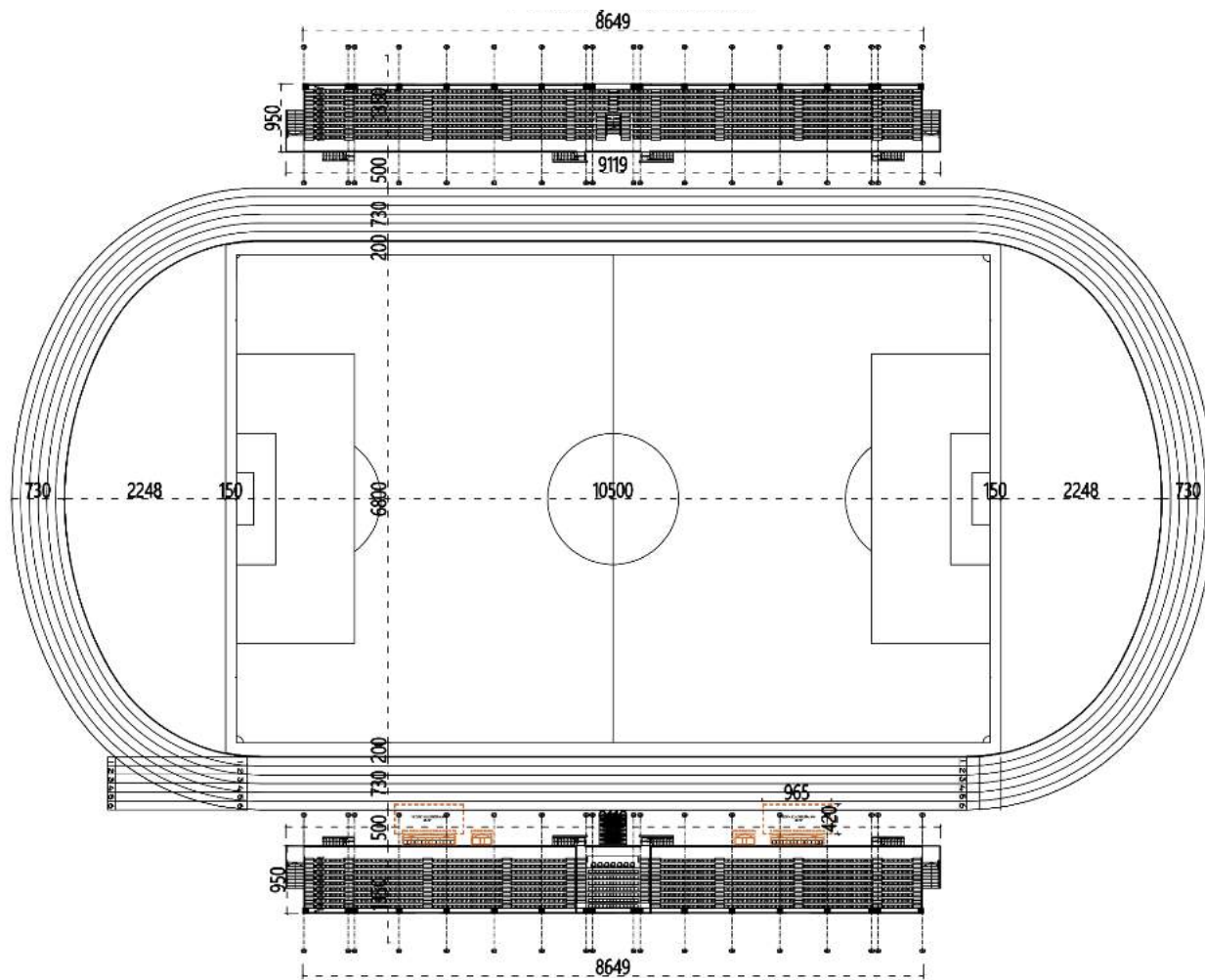
ARCHITECTURAL PLAN





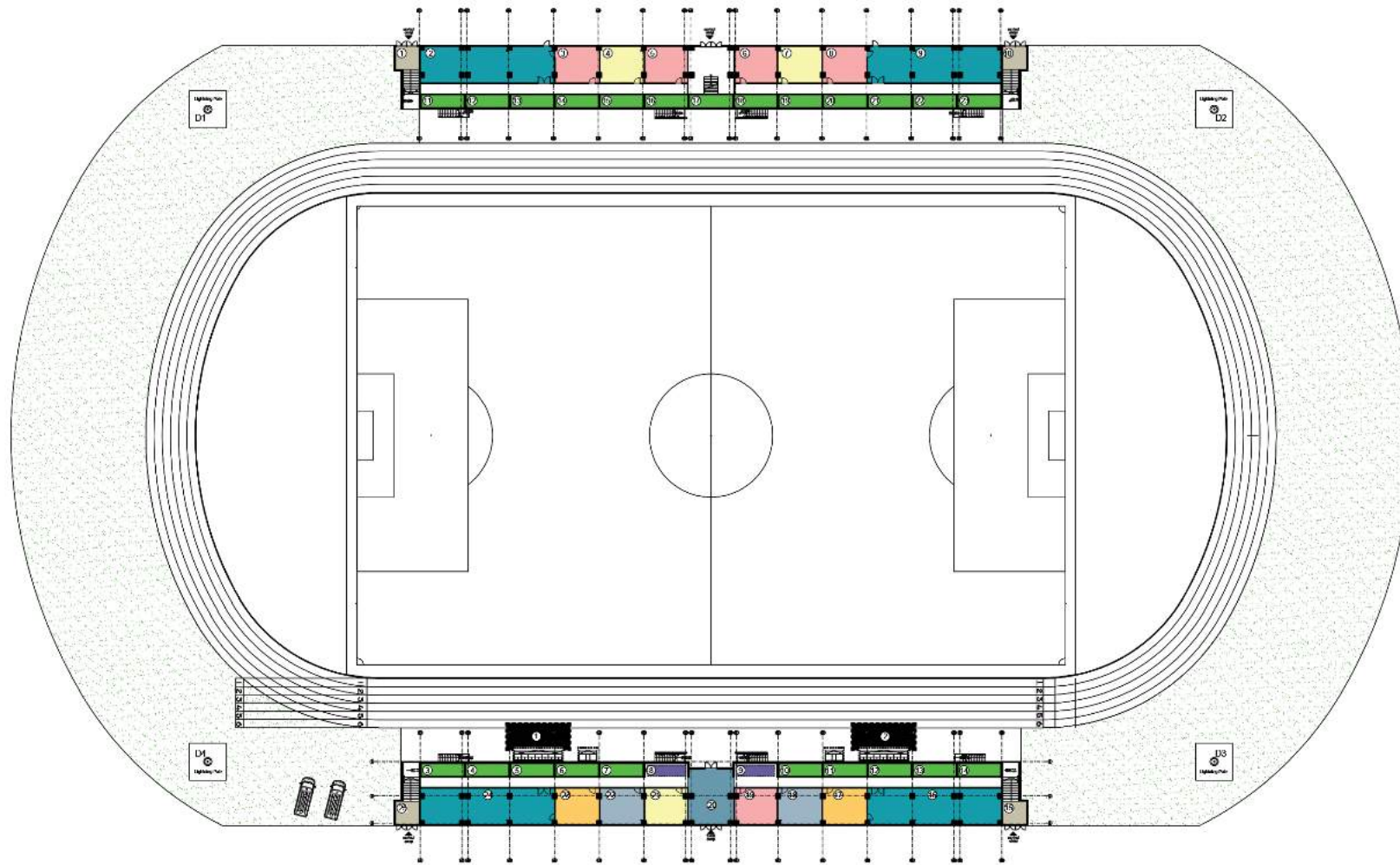
GROUND FLOOR ARCHITECTURAL PLAN





FIRST FLOOR ARCHITECTURAL PLAN

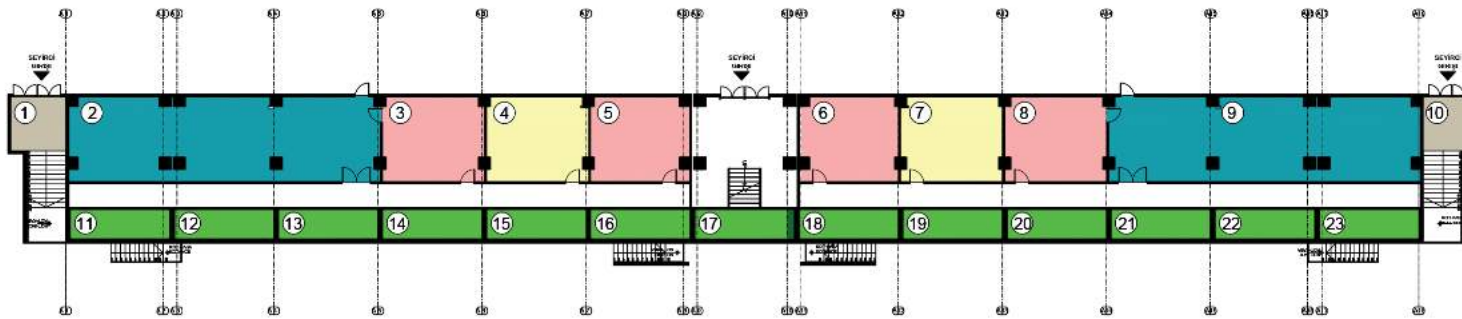




TRIBUNES

ARCHITECTURAL PLAN



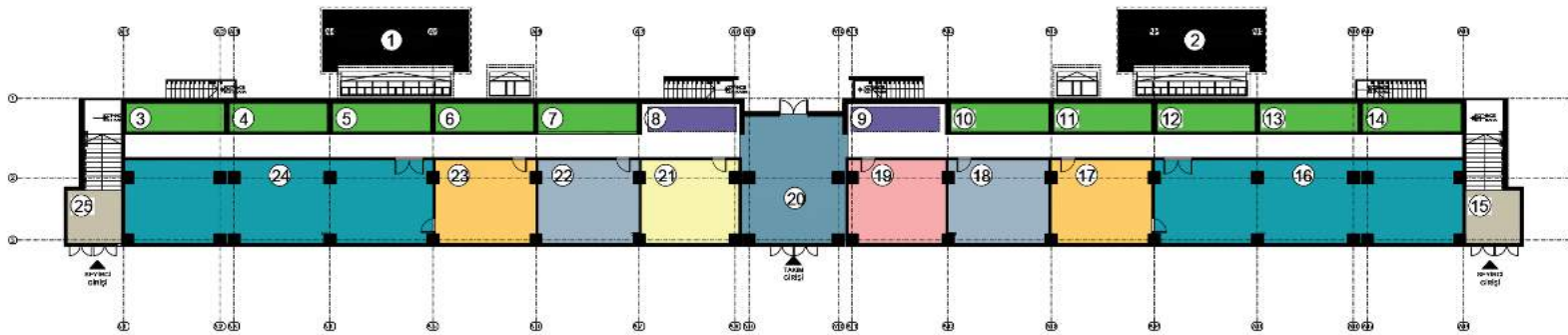


	NUMBER/ NOMBRE	COLOUR/ COULEUR	SQUARE METERS/ MÈTRES CARRÉS	VENUE NAME/ NOM DU SITE		NUMBER/ NOMBRE	COLOUR/ COULEUR	SQUARE METERS/ MÈTRES CARRÉS	VENUE NAME/ NOM DU SITE
SEYIRCI TRIBÜND	1		11.90 m ²	Audience Entry Entrée du public	SEYIRCI TRIBÜND	15		12.00 m ²	Technical Volume Volume technique
	2		106.00 m ²	Fitness Center Centre de fitness		16		12.00 m ²	Technical Volume Volume technique
	3		19.00 m ²	Office Bureau		17		12.00 m ²	Technical Volume Volume technique
	4		19.00 m ²	Technical Volume Volume technique		18		12.00 m ²	Technical Volume Volume technique
	5		19.00 m ²	Office Bureau		19		12.00 m ²	Technical Volume Volume technique
	6		19.00 m ²	Office Bureau		20		12.00 m ²	Technical Volume Volume technique
	7		19.00 m ²	Technical Volume Volume technique		21		12.00 m ²	Technical Volume Volume technique
	8		19.00 m ²	Office Bureau		22		12.00 m ²	Technical Volume Volume technique
	9		106.00 m ²	Fitness Center Centre de fitness		23		12.00 m ²	Technical Volume Volume technique
	10		11.90 m ²	Audience Entry Entrée du public					
	11		12.00 m ²	Technical Volume Volume technique					
	12		12.00 m ²	Technical Volume Volume technique					
	13		12.00 m ²	Technical Volume Volume technique					
	14		12.00 m ²	Technical Volume Volume technique					

TRIBUNES

ARCHITECTURAL PLAN



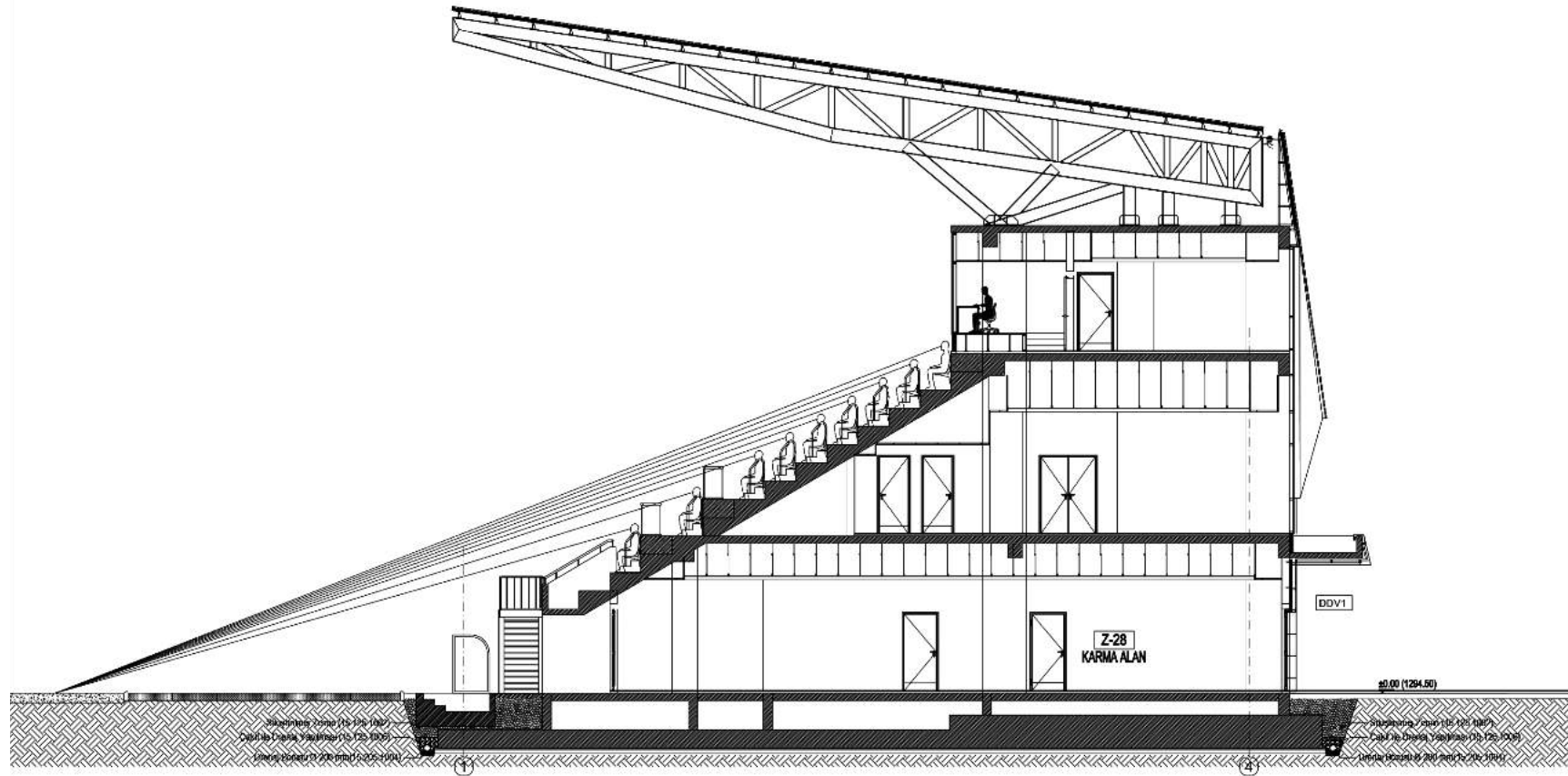


	NUMBER/ NOMBRE	COLOUR/ COULEUR	SQUARE METERS/ MÈTRES CARRÉS	VENUE NAME/ NOM DU SITE		NUMBER/ NOMBRE	COLOUR/ COULEUR	SQUARE METERS/ MÈTRES CARRÉS	VENUE NAME/ NOM DU SITE
MARATON TRIBUNÜ	1		55.00 m ²	Reserve Bench Area Zone de banc de remplaçant	MARATON TRIBUNÜ	15		11.90 m ²	Audience Entry Entrée du public
	2		55.00 m ²	Reserve Bench Area Zone de banc de remplaçant		16		106.00 m ²	Team Dressing R- S. Vestiaires et douches de l'équipe
	3		12.00 m ²	Technical Volume Volume technique		17		19.00 m ²	Technical Director's Room salle de carrosse
	4		12.00 m ²	Technical Volume Volume technique		18		19.00 m ²	Referee's Room salle des arbitres
	5		12.00 m ²	Technical Volume Volume technique		19		19.00 m ²	Office Bureau
	6		12.00 m ²	Technical Volume Volume technique		20		55.00 m ²	Mixed Field Kanna Alan
	7		12.00 m ²	Technical Volume Volume technique		21		19.00 m ²	Technical Volume Volume technique
	8		12.00 m ²	Interview Area Zone de reportage		22		19.00 m ²	Referee's Room salle des arbitres
	9		12.00 m ²	Interview Area Zone de reportage		23		19.00 m ²	Technical Director's Room salle de carrosse
	10		12.00 m ²	Technical Volume Volume technique		24		106.00 m ²	Team Dressing R- S. Vestiaires et douches de l'équipe
	11		12.00 m ²	Technical Volume Volume technique		25		11.90 m ²	Audience Entry Entrée du public
	12		12.00 m ²	Technical Volume Volume technique					
	13		12.00 m ²	Technical Volume Volume technique					
	14		12.00 m ²	Technical Volume Volume technique					

TRIBUNES

ARCHITECTURAL PLAN

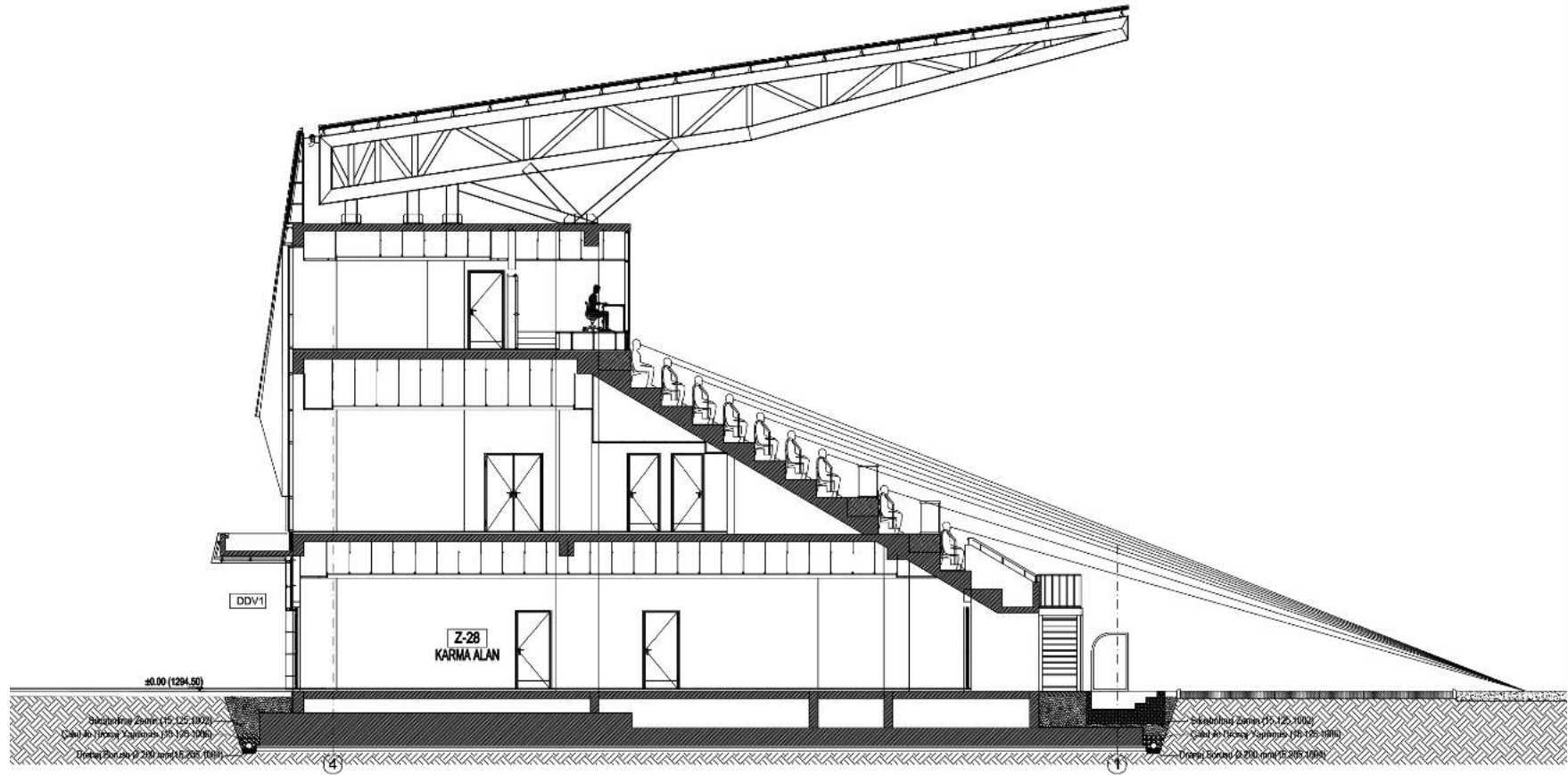




TRIBUNES

ARCHITECTURAL PLAN





TRIBUNES

ARCHITECTURAL PLAN





reform[®]
sports



www.reformsports.com